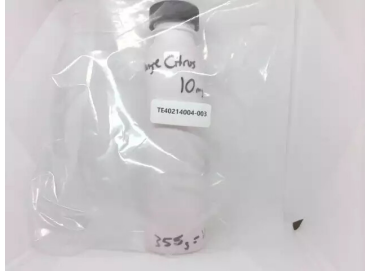




Certificate of Analysis



Sample: **TE40214004-003**
Harvest/Lot ID: **07.06.23.DSU.VKL**
Batch#: **07.06.23.DSU.VKL-OK-9**
Batch Date: **02/14/24**
Sample Size Received: **412.53 gram**
Total Amount: **10 gram**
Retail Product Size: **355 ml**
Retail Serving Size: **355 ml**
Servings: **1**
Sample Density: **1.08 g/mL**
Ordered: **02/14/24**
Sampled: **02/14/24**
Sample Collection Time: **03:00 PM**
Completed: **02/16/24**
Revision Date: **06/12/24**

PASSED

Jun 12, 2024 | Sublime Brands
License # 00000014ESNA15249640
1101 N 21st Ave
Phoenix, AZ, 85009, US

Pages 1 of 3

SAFETY RESULTS

Pesticides NOT TESTED	Heavy Metals NOT TESTED	Microbials PASSED	Mycotoxins NOT TESTED	Residuals Solvents NOT TESTED	Filtration NOT TESTED	Water Activity NOT TESTED	Moisture NOT TESTED	Terpenes NOT TESTED

10 mg THC



Cannabinoid

PASSED



Total THC

0.0025%

Total THC/Container : 9.5850 mg



Total CBD

ND

Total CBD/Container : 0.0000 mg



Total Cannabinoids

0.0025%

Total Cannabinoids/Container : 9.5850 mg

	D9-THC	THCA	CBD	CBDA	CBG	CBGA	CBN	D8-THC	THCV	CBDV	CBC
%	0.0025	ND	ND	ND	ND	ND	ND	ND	ND	ND	ND
mg/g	0.0250	ND	ND	ND	ND	ND	ND	ND	ND	ND	ND
LOD	0.0020	0.0020		0.0020	0.0020	0.0010	0.0020	0.0020	0.0020	0.0020	0.0010
%		%	%	%	%	%	%	%	%	%	%

Analyzed by:
312, 272, 333

Weight:
1.0297g

Extraction date:
02/15/24 12:27:32

Extracted by:
312

Analysis Method : SOP.T.30.500, SOP.T.30.031, SOP.T.40.031

Analytical Batch : TE003970POT

Instrument Used : TE-005 "Lady Jessica" (Concentrates)

Analyzed Date : N/A

Reviewed On : 02/16/24 12:18:17

Batch Date : 02/15/24 09:38:24

Dilution : 2

Reagent : N/A

Consumables : N/A

Pipette : N/A

Full spectrum cannabinoid analysis utilizing High Performance Liquid Chromatography with Photo Diode Array detector (HPLC-PDA) for analysis. (Methods: SOP.T.30.500 for sample homogenization, SOP.T.30.031 for sample prep, SOP.T.40.031 for analysis on Shimadzu LC-20X0 series HPLCs). Potency results for cannabis flower products are reported on an "as received" basis, without moisture correction.

Analyzed by:

Weight:

Extraction date:

Extracted by:

This Kaycha Labs Certification shall not be reproduced, unless in its entirety, without written approval from Kaycha Labs. The results relate only to the material or product analyzed. ND=Not Detected, ppm=Parts Per Million, ppb=Parts Per Billion, RSD=Relative Standard Deviation. Limit of Detection (LOD) and Limit Of Quantitation (LOQ) are terms used to describe the smallest concentration that can be detected and reliably measured by an analytical procedure, respectively. Action Levels are State-determined thresholds based on the action limits published in Table 3.1 of 9 A.A.C. 17 and 9 A.A.C. 18. The Measurement of Uncertainty (MU) error is available from the lab upon request. The "Decision Rule" for pass/fail does not include the MU. Any calculated totals may contain rounding errors. Testing results were obtained according to requirements stated in QMS.100.010.AZ Quality Manual.

Ariel Gonzales

Lab Director

State License #
00000024LCMD66604568
ISO 17025 Accreditation # 97164

Signature
02/16/24

Revision: #1

This revision supersedes any and all previous versions of this document.



1231 W. Warner Road, Suite 105
Tempe, AZ, 85284, US
(833) 465-8378

Kaycha Labs

Orange Citrus 10mg
Hybrid
Matrix : Infused
Type: Beverage



Certificate of Analysis

PASSED

Sublime Brands

1101 N 21st Ave
Phoenix, AZ, 85009, US
Telephone: (602) 525-4966
Email: info@sublimeaz.com
License #: 00000014ESNA15249640

Sample : TE40214004-003

Harvest/Lot ID: 07.06.23.DSU.VKL

Batch#: 07.06.23.DSU.VKL-OK-9

Sampled : 02/14/24

Ordered : 02/14/24

Sample Size Received : 412.53 gram

Total Amount : 10 gram

Completed : 02/16/24 Expires: 06/12/25

Sample Method : SOP Client Method

Page 2 of
3

COMMENTS

* Confident Cannabis sample ID: 2402KLAZ0110.0457



* Cannabinoid TE40214004-003POT

1 - M2: D8-THC

This Kaycha Labs Certification shall not be reproduced, unless in its entirety, without written approval from Kaycha Labs. The results relate only to the material or product analyzed. ND=Not Detected, ppm=Parts Per Million, ppb=Parts Per Billion, RSD=Relative Standard Deviation. Limit of Detection (LOD) and Limit Of Quantitation (LOQ) are terms used to describe the smallest concentration that can be detected and reliably measured by an analytical procedure, respectively. Action Levels are State-determined thresholds based on the action limits published in Table 3.1 of 9 A.A.C. 17 and 9 A.A.C. 18. The Measurement of Uncertainty (MU) error is available from the lab upon request. The "Decision Rule" for pass/fail does not include the MU. Any calculated totals may contain rounding errors. Testing results were obtained according to requirements stated in QMS.100.010.AZ Quality Manual.

Ariel Gonzales

Lab Director

State License #
00000024LCMD66604568
ISO 17025 Accreditation # 97164

Signature
02/16/24



1231 W. Warner Road, Suite 105
Tempe, AZ, 85284, US
(833) 465-8378

Kaycha Labs

Orange Citrus 10mg
Hybrid
Matrix : Infused
Type: Beverage



Certificate of Analysis

PASSED

Sublime Brands

1101 N 21st Ave
Phoenix, AZ, 85009, US
Telephone: (602) 525-4966
Email: info@sublimeaz.com
License #: 00000014ESNA15249640

Sample : TE40214004-003

Harvest/Lot ID: 07.06.23.DSU.VKL

Batch#: 07.06.23.DSU.VKL-OK-9

Sampled : 02/14/24

Ordered : 02/14/24

Sample Size Received : 412.53 gram

Total Amount : 10 gram

Completed : 02/16/24 Expires: 06/12/25

Sample Method : SOP Client Method

Page 3 of
3

COMMENTS

* Confident Cannabis sample ID: 2402KLAZ0110.0457



This Kaycha Labs Certification shall not be reproduced, unless in its entirety, without written approval from Kaycha Labs. The results relate only to the material or product analyzed. ND=Not Detected, ppm=Parts Per Million, ppb=Parts Per Billion, RSD=Relative Standard Deviation. Limit of Detection (LOD) and Limit Of Quantitation (LOQ) are terms used to describe the smallest concentration that can be detected and reliably measured by an analytical procedure, respectively. Action Levels are State-determined thresholds based on the action limits published in Table 3.1 of 9 A.A.C. 17 and 9 A.A.C. 18. The Measurement of Uncertainty (MU) error is available from the lab upon request. The "Decision Rule" for pass/fail does not include the MU. Any calculated totals may contain rounding errors. Testing results were obtained according to requirements stated in QMS.100.010.AZ Quality Manual.

Ariel Gonzales

Lab Director

State License #
00000024LCMD66604568
ISO 17025 Accreditation # 97164

Signature
02/16/24

Revision: #1

This revision supersedes any and all previous versions of this document.