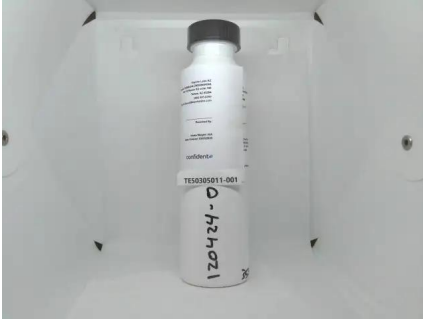




Certificate of Analysis

Pages 1 of 3

PASSED

Harvest/Lot ID: 120424
Batch #: 120424-OC-20
Harvest Date: 09/20/24
Manufacturing Date: 03/05/25
Production Method: Alcohol
Total Amount: 1 units
Retail Product Size: 354.882 ml
Retail Serving Size: 354.882
Servings: 1

Lab ID: TE50305011-001
Sampled: 03/05/25
Received: 411.43 gram
Sampling Method: N/A
Completed: 03/10/25
Expire: 03/11/26

Sublime Brands

1101 N 21st Ave
Phoenix, AZ, 85009, US
License #: 00000014ESNA15249640


Cannabinoid

PASSED

Total THC
0.0024%
Total THC/Container : 9.20 mg

Total CBD
ND
Total CBD/Container : 0.00 mg

Total Cannabinoids ^{Q3}
0.0024%
Total Cannabinoids/Container :
9.20 mg

	D9-THC	THCA	CBD	CBDA	CBG	CBGA	CBN	D8-THC	THCV	CBDV	CBC
%	0.0024	ND	ND	ND	ND	ND	ND	ND	ND	ND	ND
mg/unit	9.199	ND	ND	ND	ND	ND	ND	ND	ND	ND	ND
LOQ	0.0001	0.0001	0.0001	0.0010	0.0010	0.0010	0.0010	0.0010	0.0010	0.0010	0.0001
%	%	%	%	%	%	%	%	%	%	%	%
Qualifier											

SAFETY RESULTS

MISC.

Pesticide	Heavy Metals	Microbial	Mycotoxins	Solvents	Filtration/Foreign Material	Water Activity	Moisture Content	Vitamin E	Terpenes
NOT TESTED	NOT TESTED	PASSED	NOT TESTED	NOT TESTED	NOT TESTED	NOT TESTED	NOT TESTED	NOT TESTED	NOT TESTED

This Kaycha Labs Certification shall not be reproduced, unless in its entirety, without written approval from Kaycha Labs. The results relate only to the material or product analyzed. ND=Not Detected, ppm=Parts Per Million, ppb=Parts Per Billion, RSD=Relative Standard Deviation. Limit of Detection (LOD) and Limit Of Quantitation (LOQ) are terms used to describe the smallest concentration that can be detected and reliably measured by an analytical procedure, respectively. Action Levels are State-determined thresholds based on the action limits published in Table 3.1 of 9 A.A.C. 17 and 9 A.A.C. 18. The Measurement of Uncertainty (MU) error is available from the lab upon request. The "Decision Rule" for pass/fail does not include the MU. Any calculated totals may contain rounding errors. Testing results were obtained according to requirements stated in QMS.100.010.AZ Quality Manual.

Madison Levy

Lab Director

State License #
00000024LCMD66604568
ISO 17025 Accreditation # 97164

Signature
03/10/25

Revision: #2 This revision supersedes any and all previous versions of this document.



1231 W. Warner Road, Suite 105
Tempe, AZ, 85284, US
(561) 322-9740

Kaycha Labs

Original Cola 10mg
Hybrid
Matrix: Infused
Classification: Hybrid
Type: Beverage



Certificate of Analysis

Pages 2 of 3

Analyzed by: 312, 432, 359, 547, 545	Weight: 2.03044g	Extraction date: 03/06/25 18:28:52	Extracted by: 312
Analysis Method : N/A			
Analytical Batch : TE007944POT			
Instrument Used : TE-004 "Duke Leto" (Flower)		Batch Date : 03/06/25 11:37:58	
Analyzed Date : 03/07/25 11:55:54			
Dilution : 4			
Reagent : 021725.01; 022725.R02; 022425.R02; 010825.R24; 020425.R21			
Consumables : 0000179471; 9479291.162; 8000038072; 20240202; 1008439554; 052024CH01; 1009015070; 1; 269336; 04402004; 48W-071966M			
Pipette : TE-059 SN:20A04528 (20-200uL); TE-064 SN:20B27672 (100-1000uL); TE-164 SN: 21H24198 (Isopropanol)			
Full spectrum cannabinoid analysis utilizing High Performance Liquid Chromatography with Photo Diode Array detector (HPLC-PDA) for analysis. (Methods: SOP.T.30.500 for sample homogenization, SOP.T.30.031 for sample prep, SOP.T.40.031 for analysis on Shimadzu LC-20X0 series HPLCs). Potency results for cannabis flower products are reported on an "as received" basis, without moisture correction.			

SAFETY RESULTS

MISC.

Pesticide	Heavy Metals	Microbial	Mycotoxins	Solvents	Filtration	Water Activity	Moisture Content	Vitamin E	Terpenes
NOT TESTED	NOT TESTED	PASSED	NOT TESTED	NOT TESTED	NOT TESTED	NOT TESTED	NOT TESTED	NOT TESTED	NOT TESTED

This Kaycha Labs Certification shall not be reproduced, unless in its entirety, without written approval from Kaycha Labs. The results relate only to the material or product analyzed. ND=Not Detected, ppm=Parts Per Million, ppb=Parts Per Billion, RSD=Relative Standard Deviation. Limit of Detection (LOD) and Limit Of Quantitation (LOQ) are terms used to describe the smallest concentration that can be detected and reliably measured by an analytical procedure, respectively. Action Levels are State-determined thresholds based on the action limits published in Table 3.1 of 9 A.A.C. 17 and 9 A.A.C. 18. The Measurement of Uncertainty (MU) error is available from the lab upon request. The "Decision Rule" for pass/fail does not include the MU. Any calculated totals may contain rounding errors. Testing results were obtained according to requirements stated in QMS.100.010.AZ Quality Manual.

Madison Levy

Lab Director

State License #
00000024LCMD66604568
ISO 17025 Accreditation # 97164

Signature
03/10/25

Revision: #2 This revision supersedes any and all previous versions of this document.



1231 W. Warner Road, Suite 105
Tempe, AZ, 85284, US
(561) 322-9740

Kaycha Labs

.....
Original Cola 10mg
Hybrid
Matrix: Infused
Classification: Hybrid
Type: Beverage



Certificate of Analysis

Pages 3 of 3

Sample: TE50305011-001

Sublime Brands

Telephone: (602) 525-4966

Email: info@sublimeaz.com

Harvest/Lot ID: 120424

Batch #: 120424-OC-20

Ordered: 03/05/25

Sampled: 03/05/25

Completed: 03/10/25

PASSED

This Kaycha Labs Certification shall not be reproduced, unless in its entirety, without written approval from Kaycha Labs. The results relate only to the material or product analyzed. ND=Not Detected, ppm=Parts Per Million, ppb=Parts Per Billion, RSD=Relative Standard Deviation. Limit of Detection (LOD) and Limit Of Quantitation (LOQ) are terms used to describe the smallest concentration that can be detected and reliably measured by an analytical procedure, respectively. Action Levels are State-determined thresholds based on the action limits published in Table 3.1 of 9 A.A.C. 17 and 9 A.A.C. 18. The Measurement of Uncertainty (MU) error is available from the lab upon request. The "Decision Rule" for pass/fail does not include the MU. Any calculated totals may contain rounding errors. Testing results were obtained according to requirements stated in QMS.100.010.AZ Quality Manual.

Madison Levy

Lab Director

State License #
00000024LCMD66604568
ISO 17025 Accreditation # 97164

Signature
03/10/25

Revision: #2 This revision supersedes any and all previous versions of this document.